

## Percent of Total Bexar County Resident Vaccine-Eligible Population by Vaccination Status and Age Group

Age Group	At Least One Dose <sup>+</sup>		Primary Series Completed <sup>++</sup>		Updated (Bivalent) Booster Dose <sup>**</sup>	
	Count	%	Count	%	Count	%
6mo - 4	7,657	6.1%	4,876	3.9%	NA	NA
5-11	79,943	40.3%	56,506	28.5%	2,076	3.7%
12-15	91,753	84.1%	75,558	69.2%	3,555	4.7%
12-18	165,015	86.8%	136,045	71.6%	6,228	4.6%
19-29	263,269	77.3%	214,868	63.1%	8,528	4.0%
30-39	250,103	83.2%	210,090	69.9%	13,596	6.5%
40-49	237,576	95.2%	201,990	80.9%	18,855	9.3%
50-64	350,050	99.9%	287,925	85.3%	46,428	16.1%
65+	306,000	99.9%	241,898	87.0%	72,343	29.9%
<b>Total Eligible Population (6mo+)</b>	<b>1,833,032</b>	<b>90.7%</b>	<b>1,492,181</b>	<b>73.8%</b>	<b>168,054</b>	<b>11.3%</b>

<sup>+</sup> VA and DOD data included for *At Least One Dose* and *Primary Series Completed*

<sup>\*</sup> *Primary Series Completed* has replaced the data formerly referred to as "Fully Vaccinated"

<sup>\*\*</sup> *Updated (Bivalent) Booster Dose* percentages are *Updated (Bivalent) Booster Dose* totals calculated against the *Primary Series Completed* totals

Note: CDC has capped the percent of population coverage metrics at 99.9%. These metrics could be greater than 99.9% for multiple reasons, including census denominator data not including all individuals that currently reside in the county (e.g., part time residents) or potential data reporting errors.

## Percent of Total Bexar County Resident Population by Vaccination Status

	At Least One Dose <sup>+</sup>		Primary Series Completed <sup>++</sup>		Updated (Bivalent) Booster Dose	
	Count	%	Count	%	Count	%
Total Population	1,833,032	90.1%	1,492,181	73.3%	168,054	8.3%

<sup>+</sup> VA and DOD data included for *At Least One Dose* and *Primary Series Completed*

<sup>\*</sup> *Primary Series Completed* has replaced the data formerly referred to as "Fully Vaccinated"

## Vaccinations of Vaccine Eligible Bexar County Residents by Race/Ethnicity

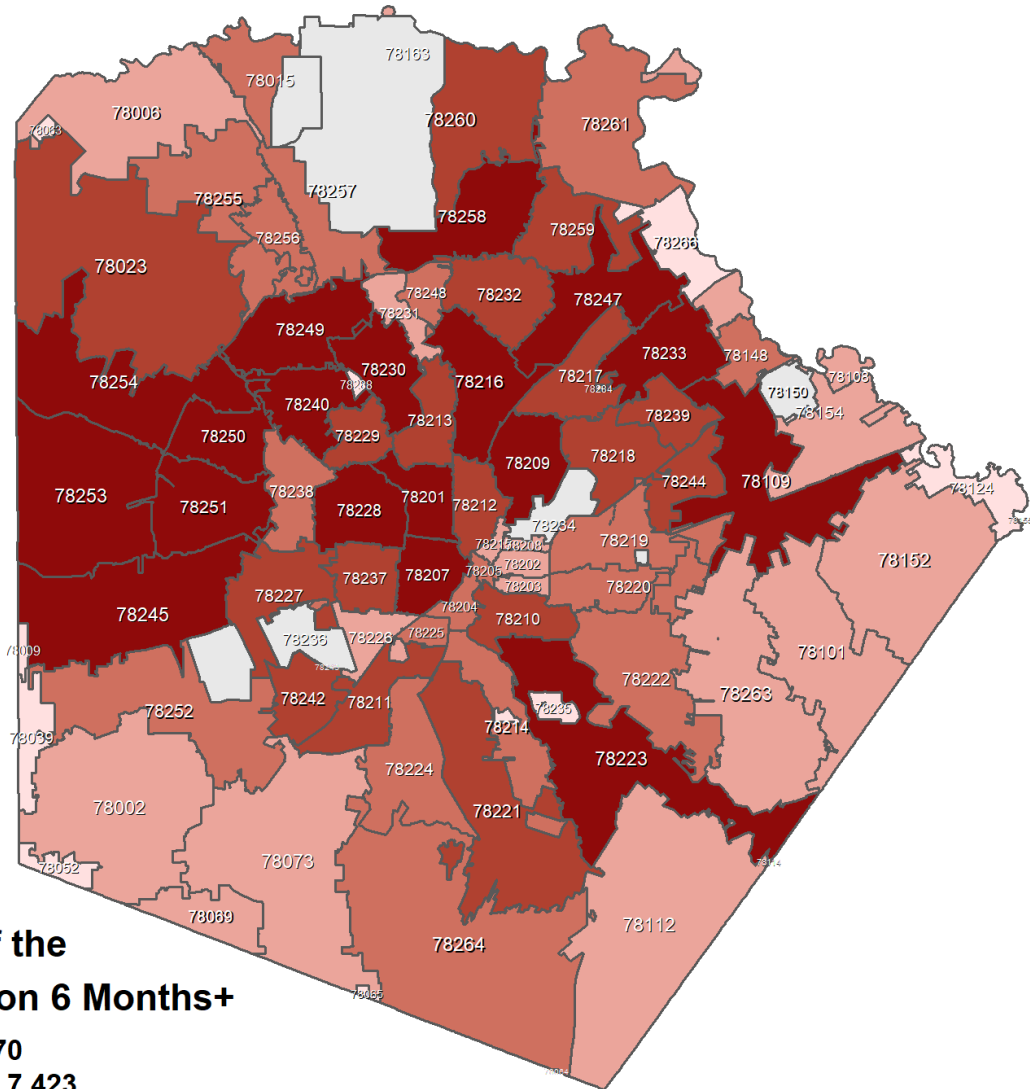
Race/Ethnicity	At Least One Dose <sup>+</sup>		Primary Series Completed <sup>++</sup>		Updated (Bivalent) Booster Dose		General Bexar County Population Percentage
	Count	%	Count	%	Count	%	
HISPANIC	700,182	43.6%	570,456	43.3%	53,380	31.9%	60.2%
NH WHITE	404,373	25.2%	323,500	24.6%	41,502	24.8%	27.7%
NH ASIAN	34,896	2.2%	28,711	2.2%	2,570	1.5%	2.7%
NH BLACK	70,586	4.4%	50,547	3.8%	5,320	3.2%	7.1%
NH OTHER	395,621	24.6%	343,661	26.1%	64,459	38.5%	2.4%

<sup>+</sup> VA data included for *At Least One Dose* and *Primary Series Completed*; DOD data not included

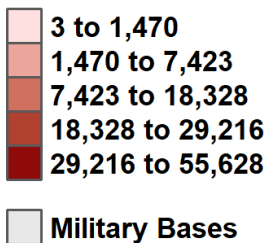
<sup>\*</sup> *Primary Series Completed* has replaced the data formerly referred to as "Fully Vaccinated"

Note: Above totals and percentages exclude those individuals whose race/ethnicity is unknown

## Count of Bexar County Residents 6 Months+ Completed Primary Series (N=1,354,197\*)

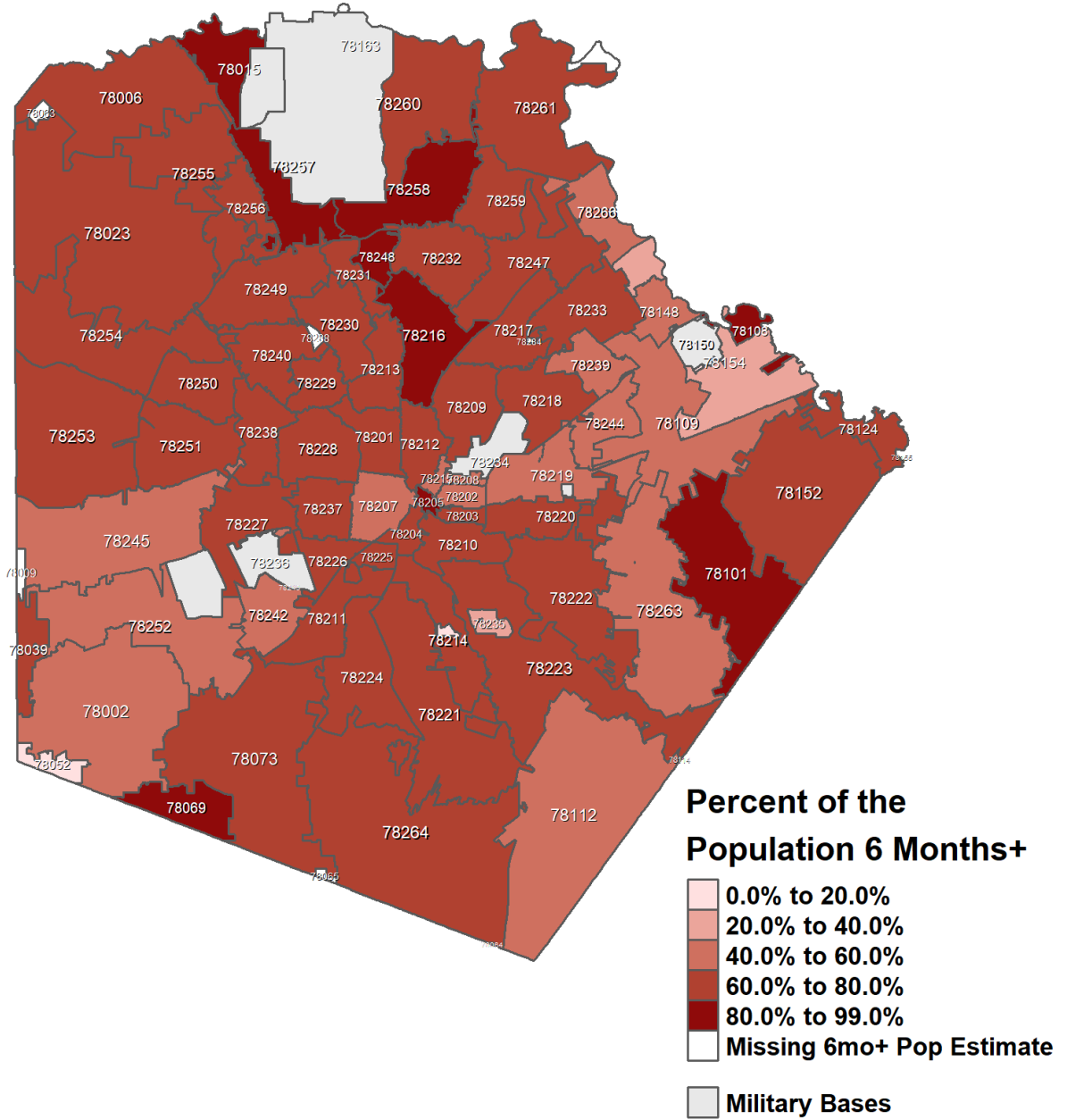


### Count of the Population 6 Months+



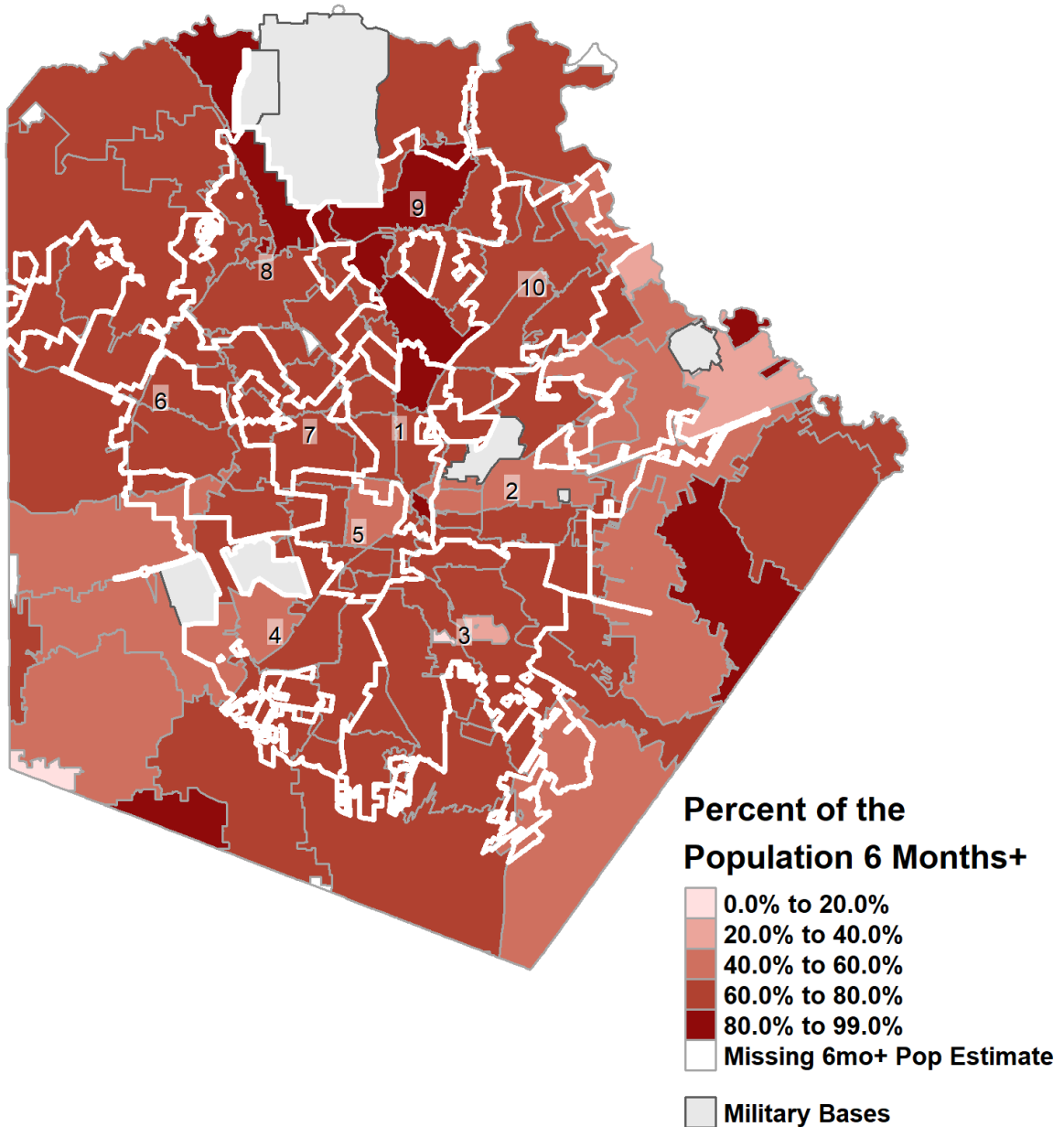
\*Individuals with a zip code that mapped into Bexar County — VA and DOD data not included

**Percent of Bexar County Residents 6 Months+  
Completed Primary Series  
(N=1,354,197\*)**



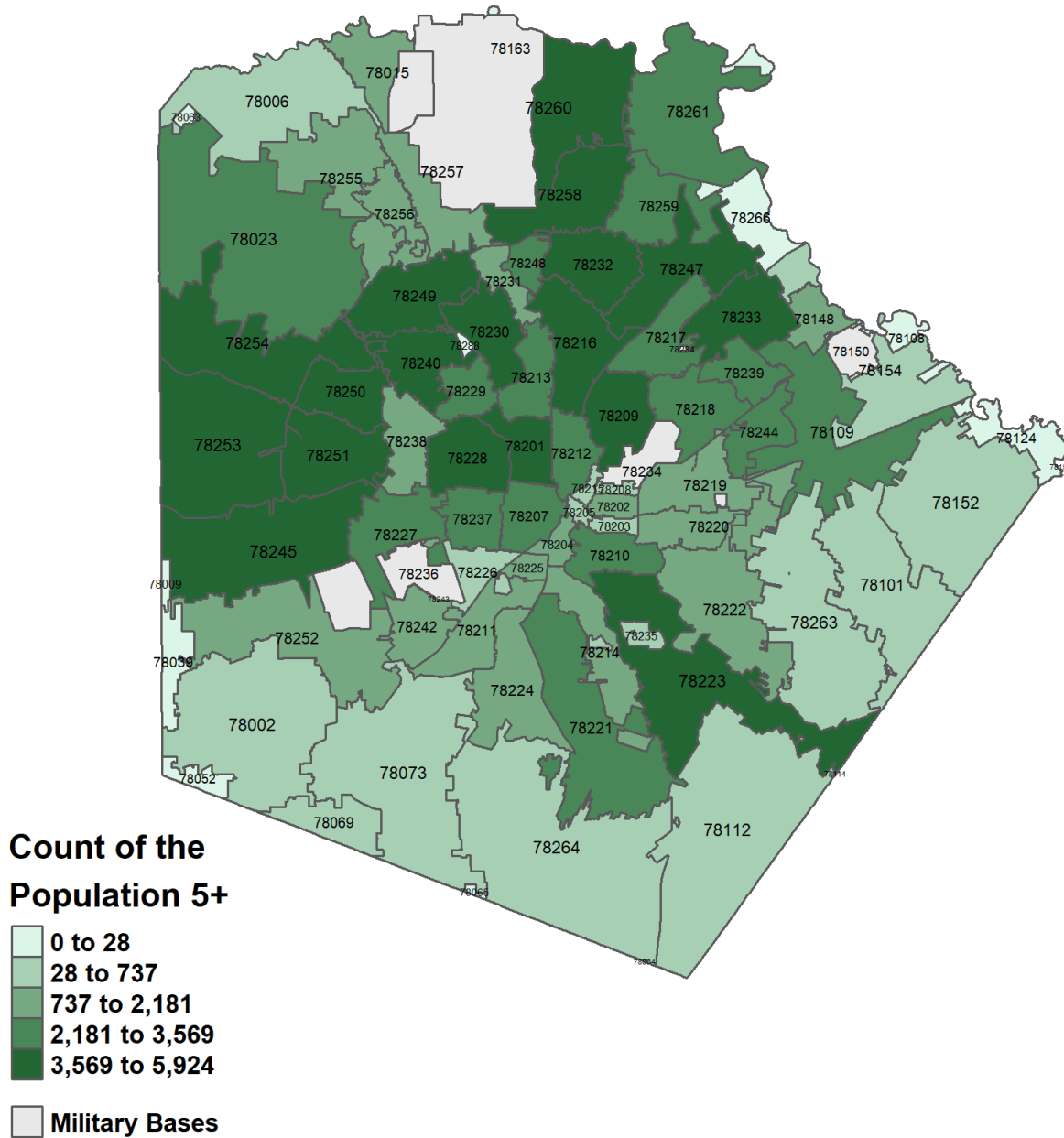
\*Individuals with a zip code that mapped into Bexar County — VA and DOD data not included

## Percent of Bexar County Residents 6 Months+ Completed Primary Series (N=1,354,197\*)



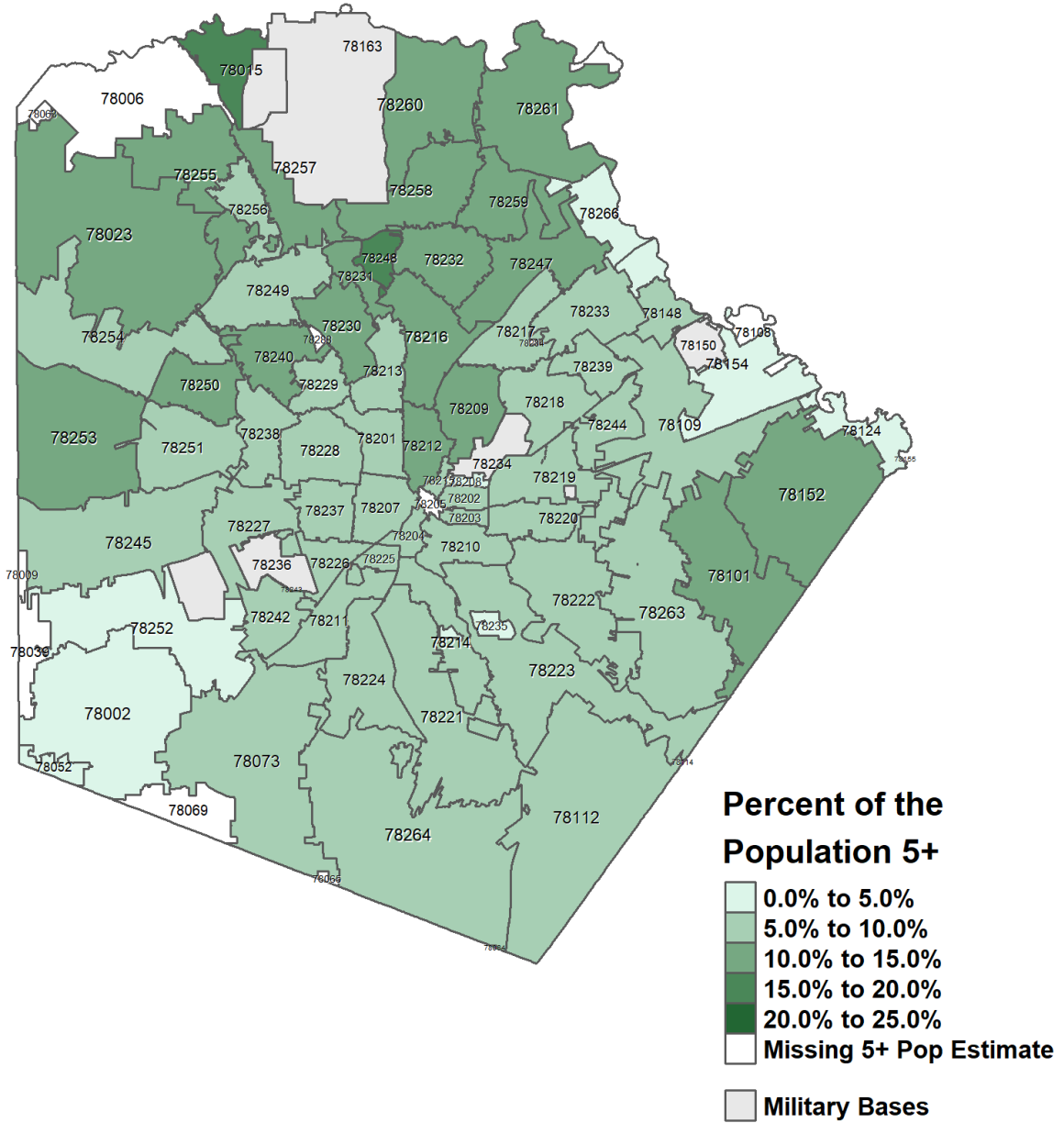
\*Individuals with a zip code that mapped into Bexar County — VA and DOD data not included

## Count of Bexar County Residents 5+ Completed Primary Series with Bivalent Booster (N=168,054\*)



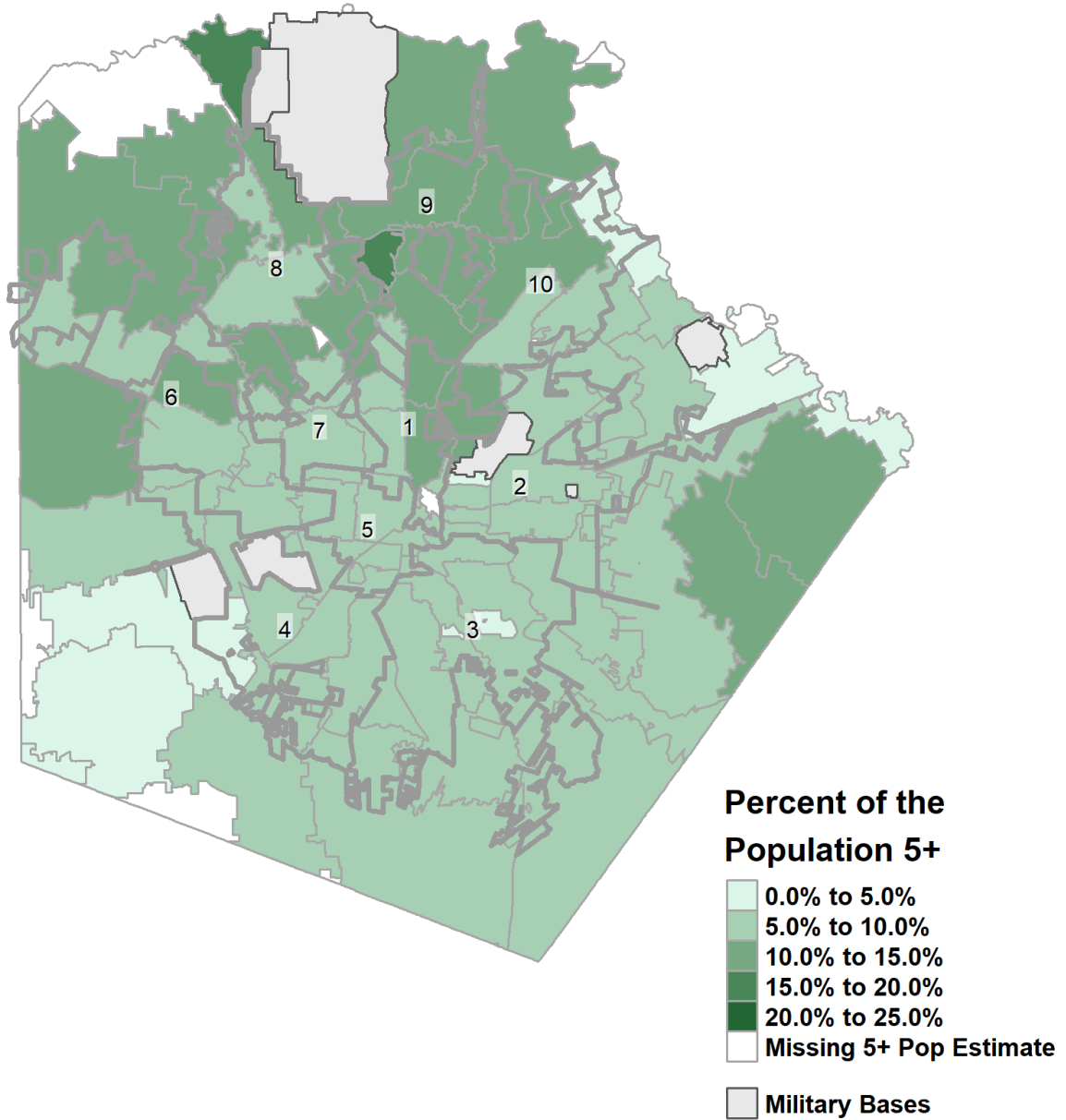
\*Individuals with a zip code that mapped into Bexar County — VA and DOD data not included

## Percent of Bexar County Residents 5+ Completed Primary Series with Bivalent Booster (N=168,054\*)



\*Individuals with a zip code that mapped into Bexar County — VA and DOD data not included

## Percent of Bexar County Residents 5+ Completed Primary Series with Bivalent Booster (N=168,054\*)



\*Individuals with a zip code that mapped into Bexar County — VA and DOD data not included