

Percent of Total Bexar County Resident Vaccine-Eligible Population by Vaccination Status and Age Group

VA and DOD data[†] included for Fully Vaccinated and Booster counts

*CDC has capped the percent of population coverage metrics at 99.9%. These metrics could be greater than 99.9% for multiple reasons, including census denominator data not including all individuals that currently reside in the county (e.g., part time residents) or potential data reporting errors.

Age Group	Fully Vaccinated		Boosted		Second Booster Dose	
	Count	%	Count	%*	Count	%**
6mo - 4	2,050	1.6%	N/A	N/A	N/A	N/A
5-11	54,126	26.7%	5,245	9.7%	N/A	N/A
12-15	74,503	68.3%	15,764	21.2%	189	1.2%
12-18	134,096	70.5%	32,486	24.2%	449	1.4%
>=18	1,299,205	85.9%	542,441	41.8%	107,813	19.9%
19-29	213,095	64.5%	54,562	25.6%	1,220	2.2%
30-39	208,452	69.4%	68,699	33.0%	2,279	3.3%
40-49	200,115	80.2%	80,913	40.4%	4,222	5.2%
50-64	285,492	84.8%	151,432	53.0%	36,889	24.4%
65+	233,856	88.3%	155,764	66.6%	63,102	40.5%
Total Eligible Population (6mo+)	1,469,265	73.4%	574,458	39.1%	108,161	18.8%
* Boosted percentages are calculated against the Fully Vaccinated totals						
** Second Booster Dose percentages are calculated against the Boosted totals						

Age Group	At Least One Dose		Fully Vaccinated	
	Count	%*	Count	%*
6mo - 4	4,726	3.7%	2,050	1.6%
* At Least One Dose and Fully Vaccinated percentages are calculated against the age group's total population				

Percent of Total Bexar County Resident Population by Vaccination Status

VA and DOD data[†] included for Fully Vaccinated counts

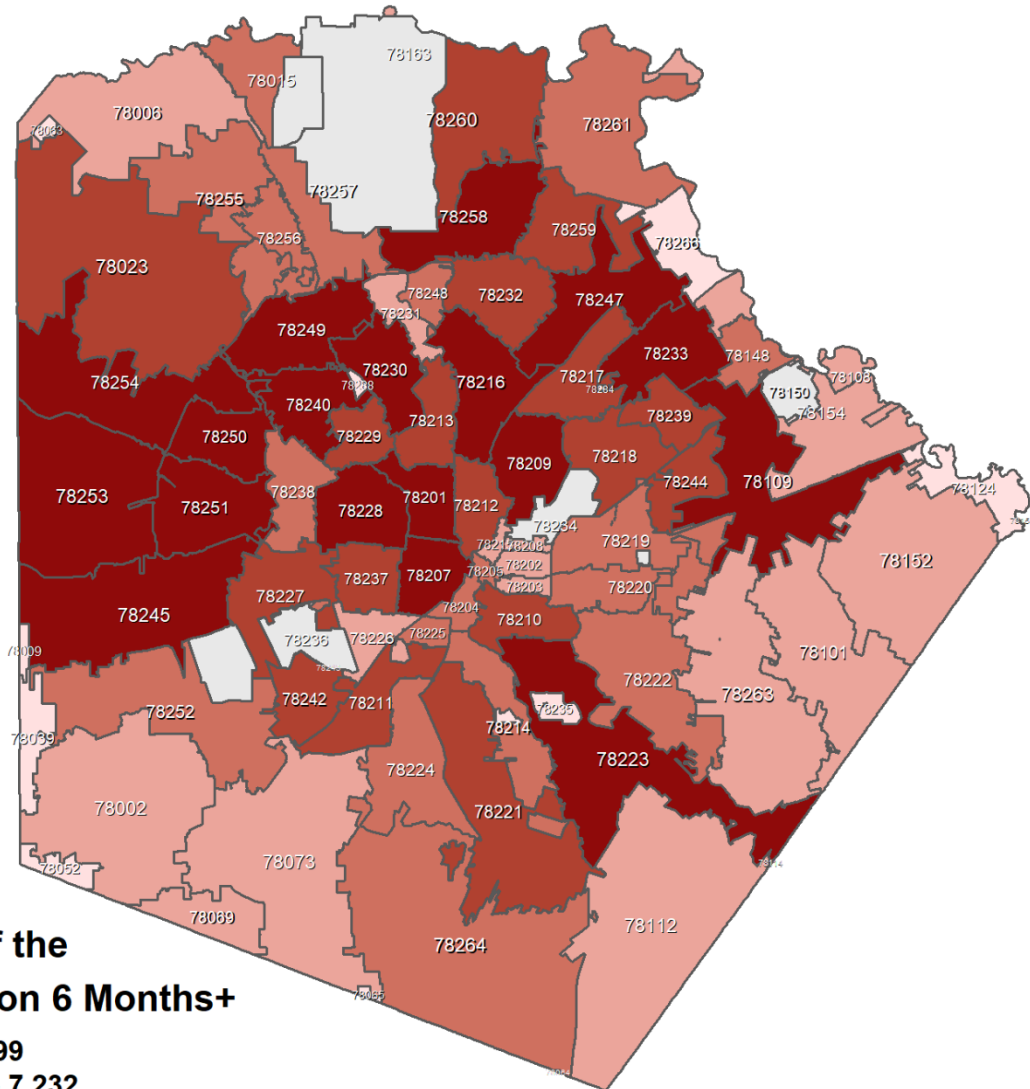
	Fully Vaccinated		Boosted		Second Booster Dose	
	Count	%	Count	%	Count	%
Total Population	1,469,265	73.3%	574,458	28.7%	108,161	5.4%

Vaccinations of Vaccine Eligible Bexar County Residents by Race/Ethnicity

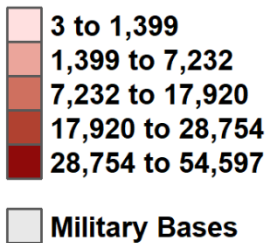
VA data included for Fully Vaccinated Counts and Boosted; DOD data not included

EXCLUDING UNKNOWN							
Race/Ethnicity	Fully Vaccinated		Boosted		Second Booster Dose		General Bexar County Population Percentage
	Count	%	Count	%	Count	%	
HISPANIC	556,499	43.1%	207,136	38.3%	33,135	30.8%	60.2%
NH WHITE	330,335	25.6%	141,118	26.1%	28,582	26.6%	27.7%
NH ASIAN	29,190	2.3%	13,164	2.4%	1,374	1.3%	2.7%
NH BLACK	50,589	3.9%	18,768	3.5%	3,313	3.1%	7.1%
NH OTHER	323,812	25.1%	160,259	29.7%	41,052	38.2%	2.4%

Count of Bexar County Residents 6 Months+ Fully Vaccinated (N=1,331,218*)

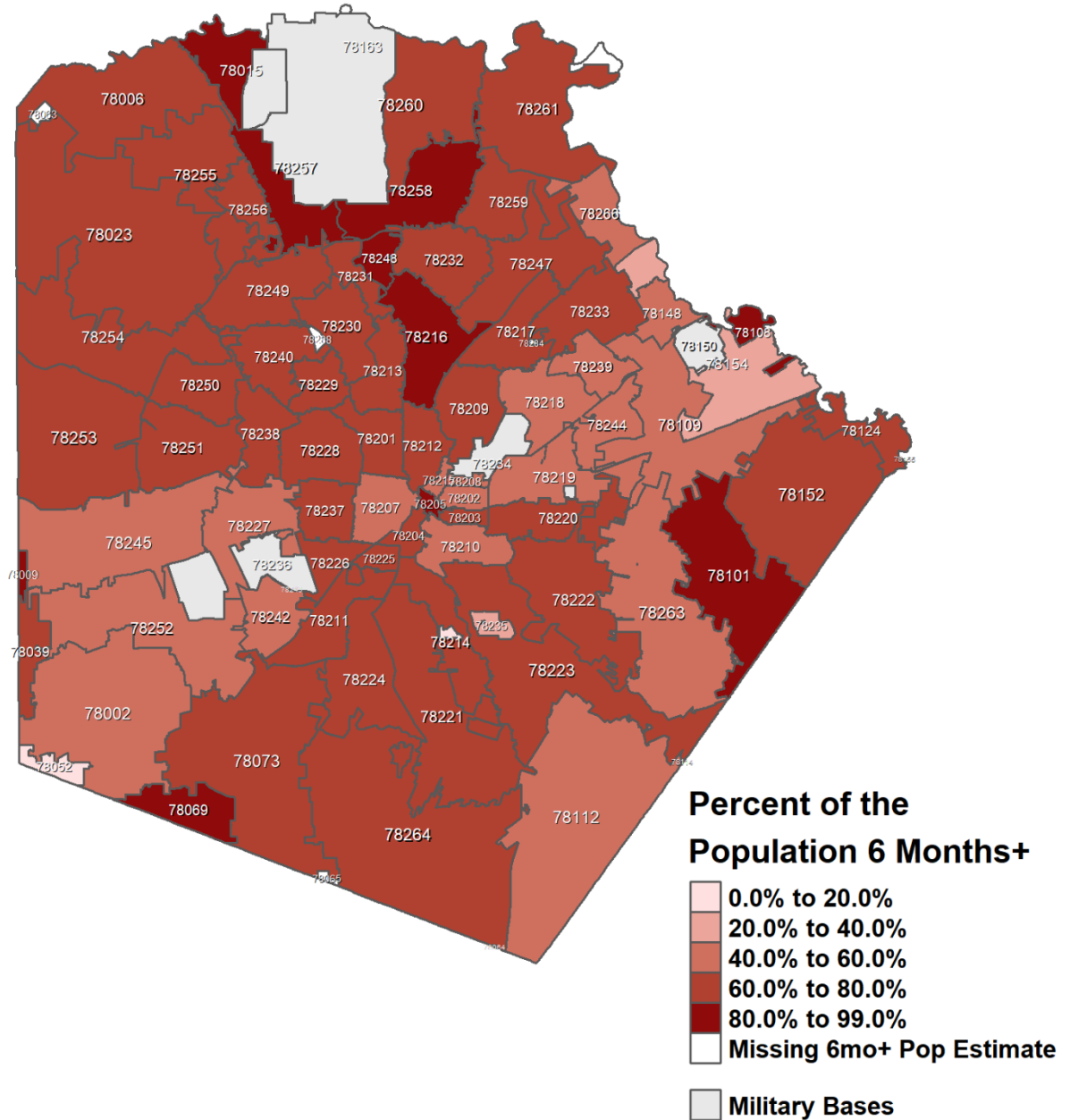


Count of the Population 6 Months+



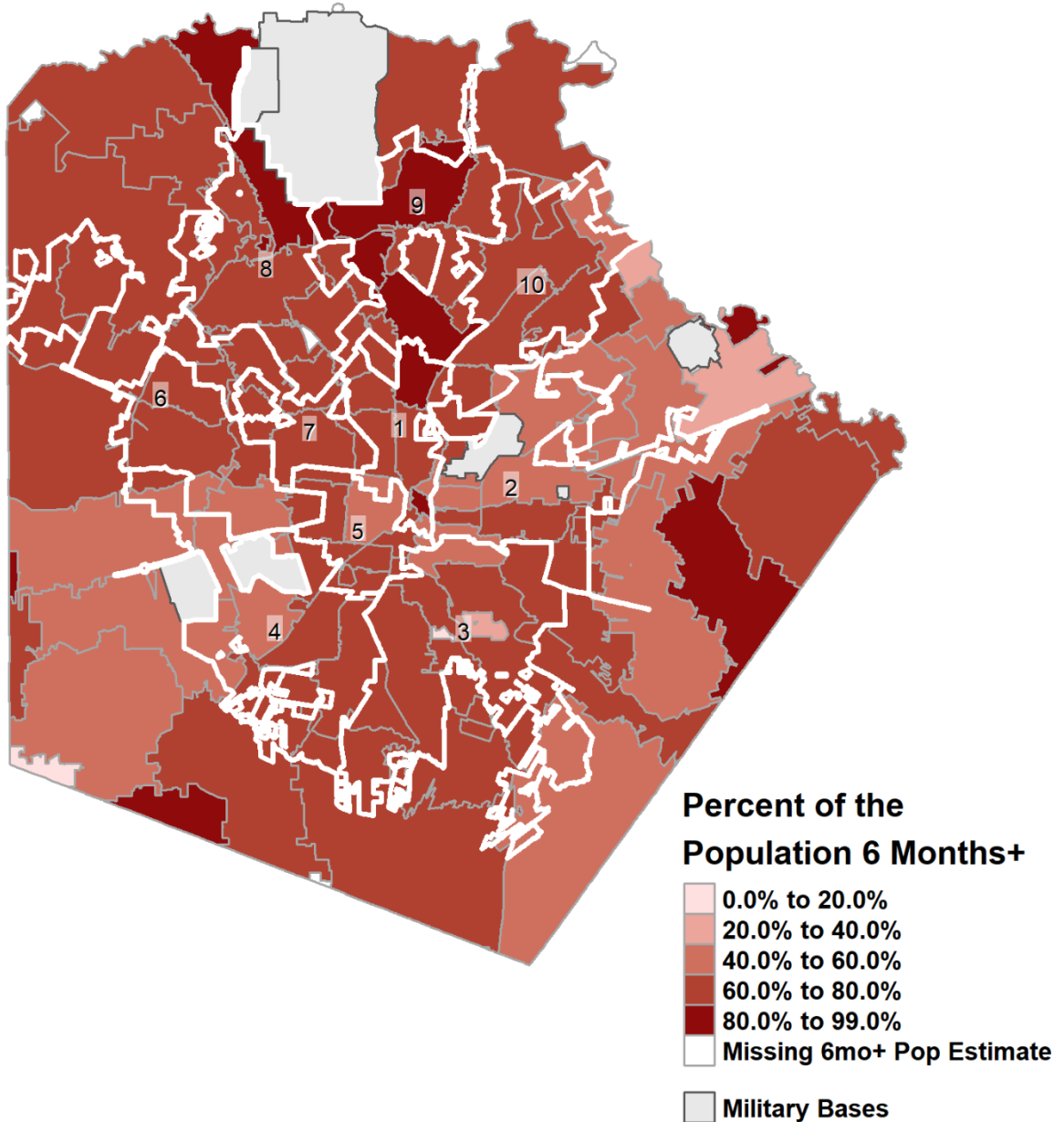
*Individuals with a zip code that mapped into Bexar County — VA and DOD data not included

Percent of Bexar County Residents 6 Months+ Fully Vaccinated (N=1,331,218*)



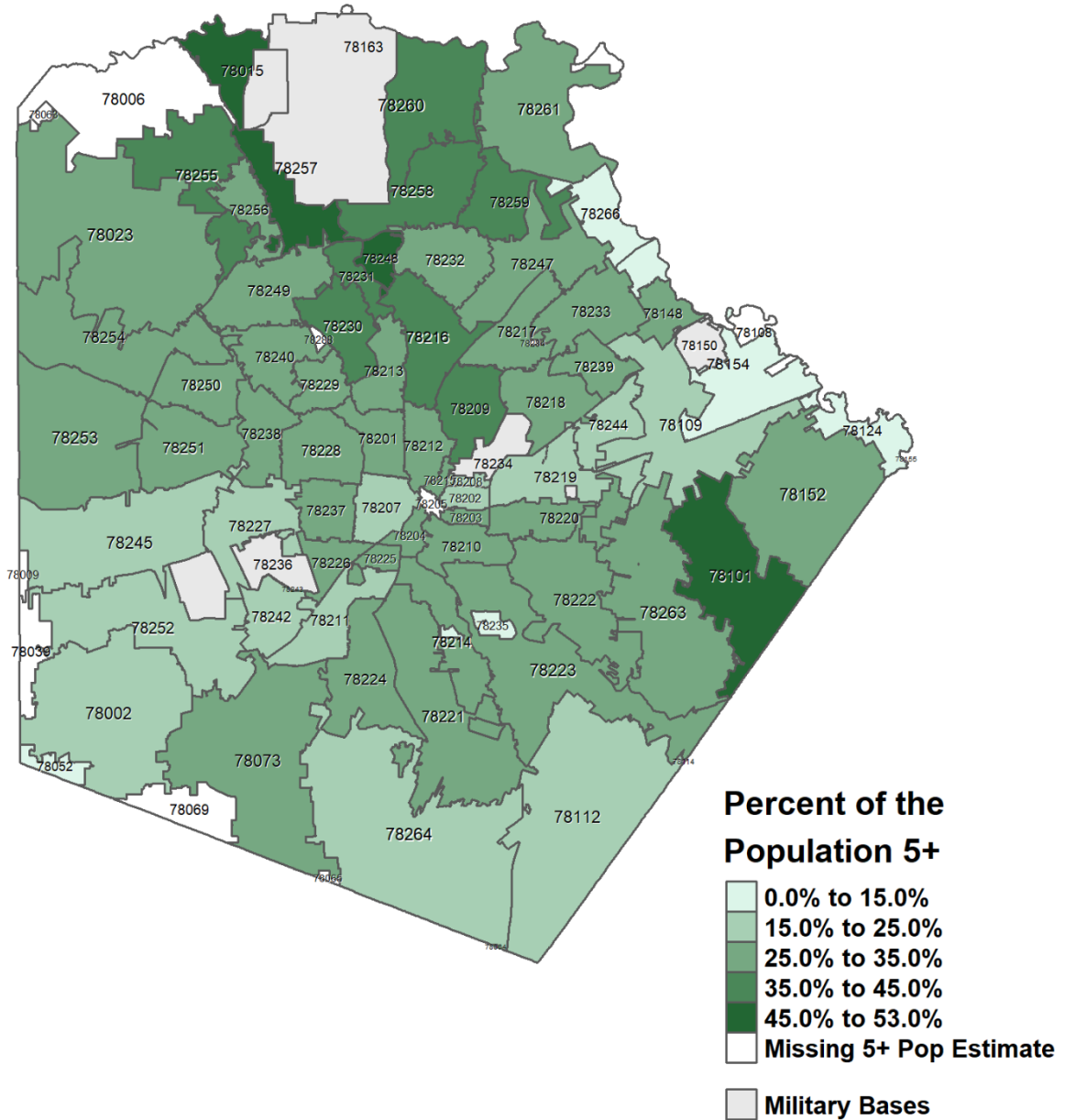
*Individuals with a zip code that mapped into Bexar County — VA and DOD data not included

Percent of Bexar County Residents 6 Months+ Fully Vaccinated (N=1,331,218*)



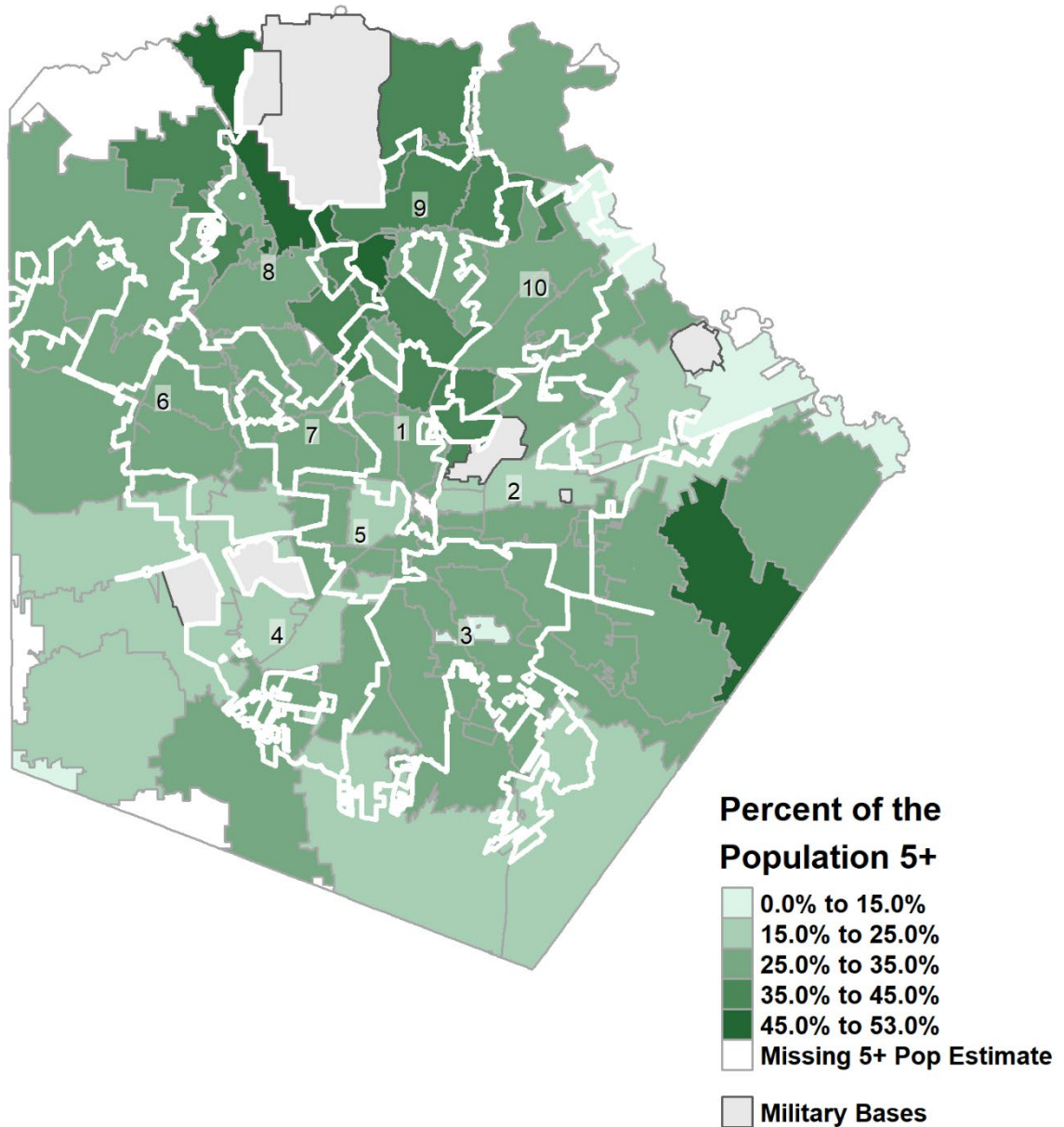
*Individuals with a zip code that mapped into Bexar County — VA and DOD data not included

Percent of Bexar County Residents 5+ Vaccinated with Booster (N=549,101*)



*Individuals with a zip code that mapped into Bexar County — VA and DOD data not included

Percent of Bexar County Residents 5+ Vaccinated with Booster (N=549,101*)



*Individuals with a zip code that mapped into Bexar County — VA and DOD data not included