

## Percent of Total Bexar County Resident Vaccine-Eligible Population by Vaccination Status and Age Group

VA and DOD data<sup>†</sup> included for Fully Vaccinated and Booster counts

\*CDC has capped the percent of population coverage metrics at 99.9%. These metrics could be greater than 99.9% for multiple reasons, including census denominator data not including all individuals that currently reside in the county (e.g., part time residents) or potential data reporting errors.

Fully Vaccinated			Boosted		Second Booster Dose	
Age Group	Count	%	Count	%*	Count	%**
5-11	51,888	25.6%	2,011	3.9%	N/A	N/A
12-15	73,820	67.6%	13,712	18.6%	121	0.9%
12-18	132,787	69.9%	29,390	22.1%	273	0.9%
>=18	1,292,308	85.5%	529,147	40.9%	80,092	15.1%
19-29	211,898	64.1%	52,926	25.0%	857	1.6%
30-39	207,575	69.1%	66,998	32.3%	1,540	2.3%
40-49	199,864	80.1%	79,376	39.7%	2,803	3.5%
50-64	283,890	84.3%	147,197	51.9%	25,454	17.3%
65+	231,189	87.3%	151,907	65.7%	49,377	32.5%
Total Eligible Population (5+)	1,457,074	77.7%	555,162	38.1%	80,304	14.5%
* Boosted percentages are calculated against the Fully Vaccinated totals						
** Second Booster percentages are calculated against the Boosted totals						

## Percent of Total Bexar County Resident Population by Vaccination Status

VA and DOD data<sup>†</sup> included for Fully Vaccinated counts

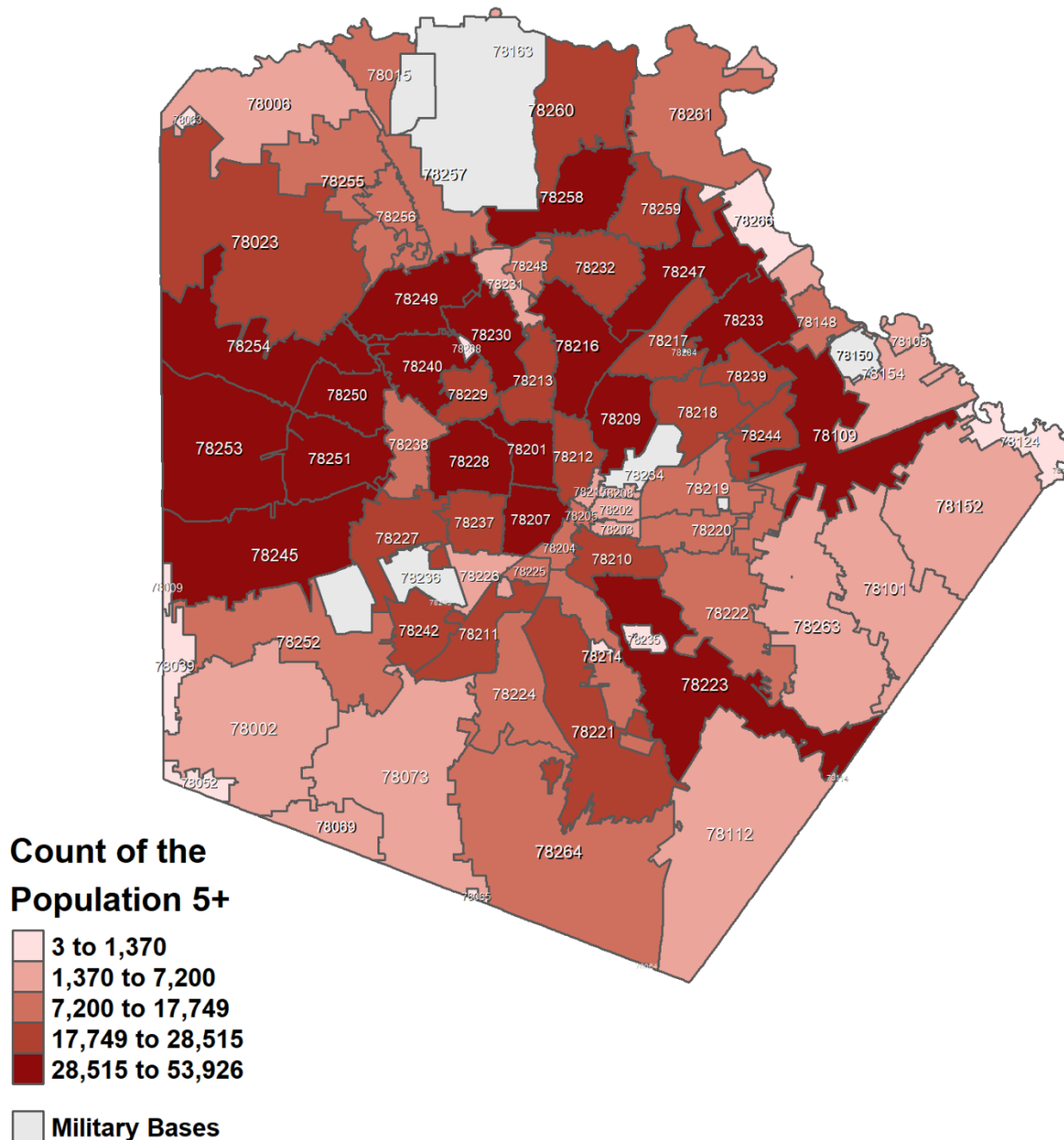
Fully Vaccinated			Boosted		Second Booster Dose	
	Count	%	Count	%	Count	%
Total Population	1,457,074	72.7%	555,162	27.7%	80,304	4.0%

## Vaccinations of Vaccine Eligible Bexar County Residents by Race/Ethnicity

VA data included for Fully Vaccinated Counts and Boosted; DOD data not included

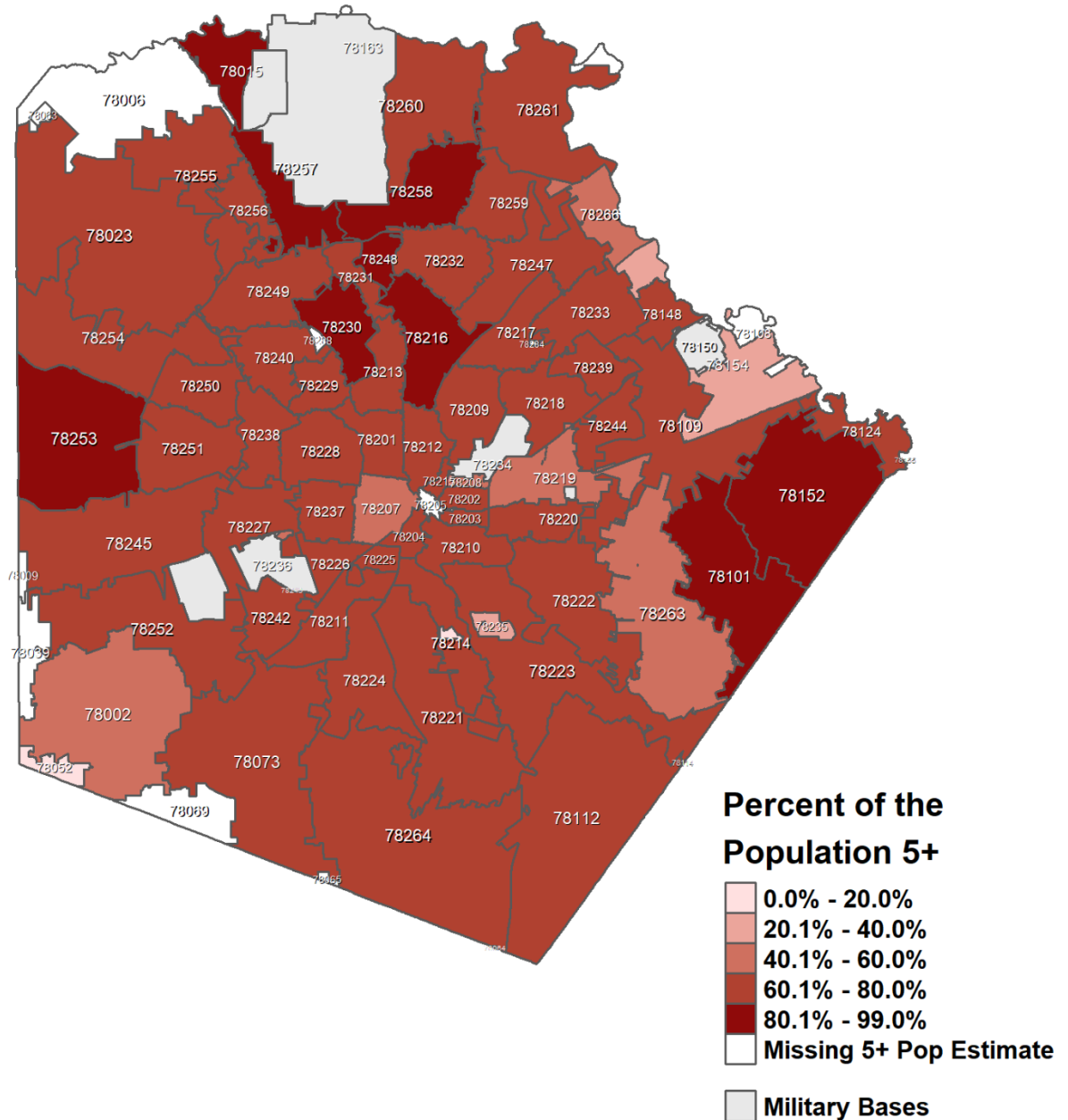
EXCLUDING UNKNOWN							
Fully Vaccinated			Boosted		Second Booster Dose		General Bexar County Population Percentage
Race/Ethnicity	Count	%	Count	%	Count	%	
HISPANIC	551,196	43.1%	198,886	38.2%	23,472	29.4%	60.2%
NH WHITE	328,674	25.7%	137,907	26.5%	21,658	27.2%	27.7%
NH ASIAN	29,059	2.3%	12,813	2.5%	1,031	1.3%	2.7%
NH BLACK	50,227	3.9%	18,176	3.5%	2,403	3.0%	7.1%
NH OTHER	318,638	24.9%	153,349	29.4%	31,202	39.1%	2.4%

## Count of Bexar County Residents 5+ Fully Vaccinated (N=1,319,023\*)



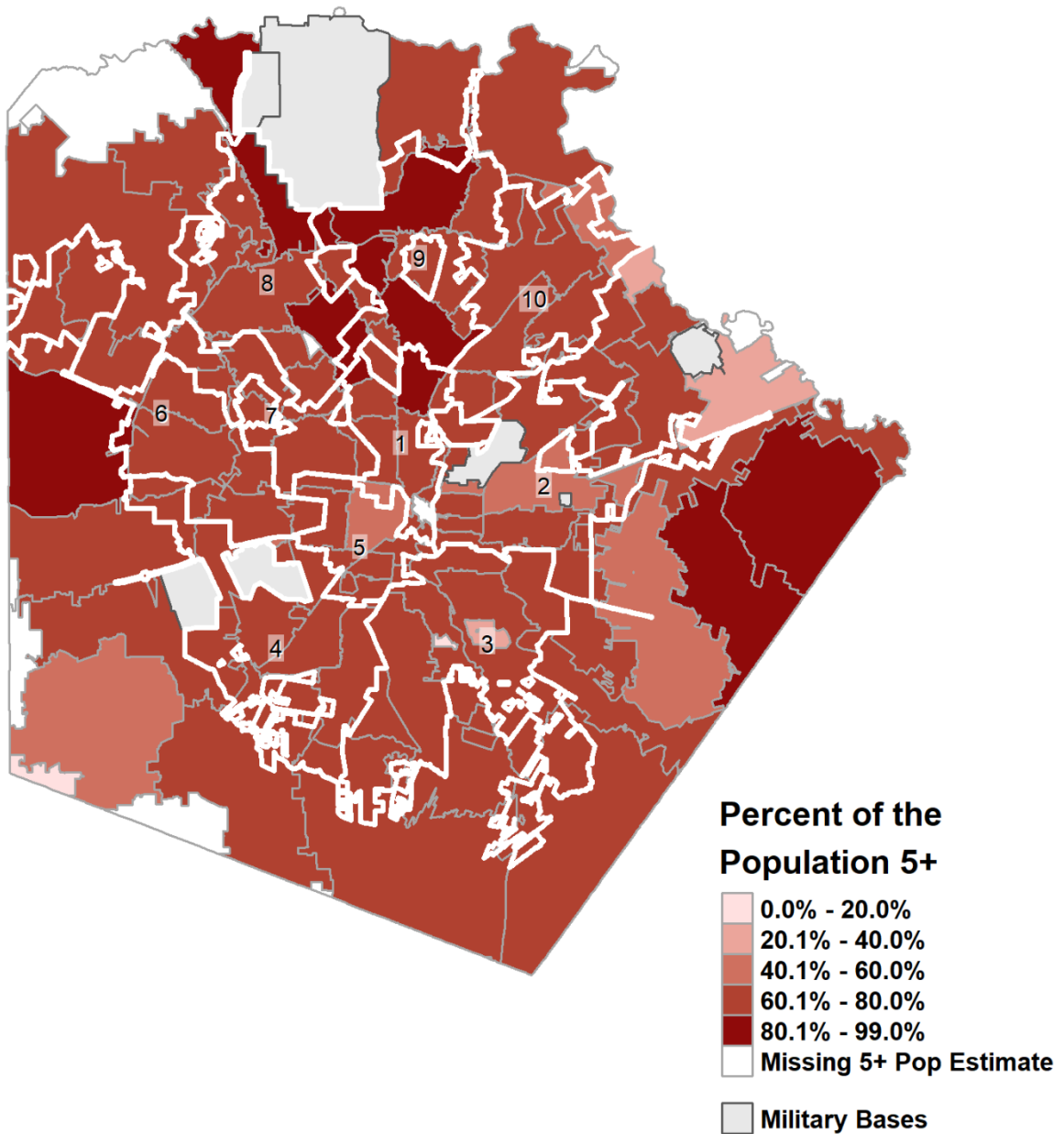
\*Individuals with a zip code that mapped into Bexar County — VA and DOD data not included

## Percent of Bexar County Residents 5+ Fully Vaccinated (N=1,319,023\*)



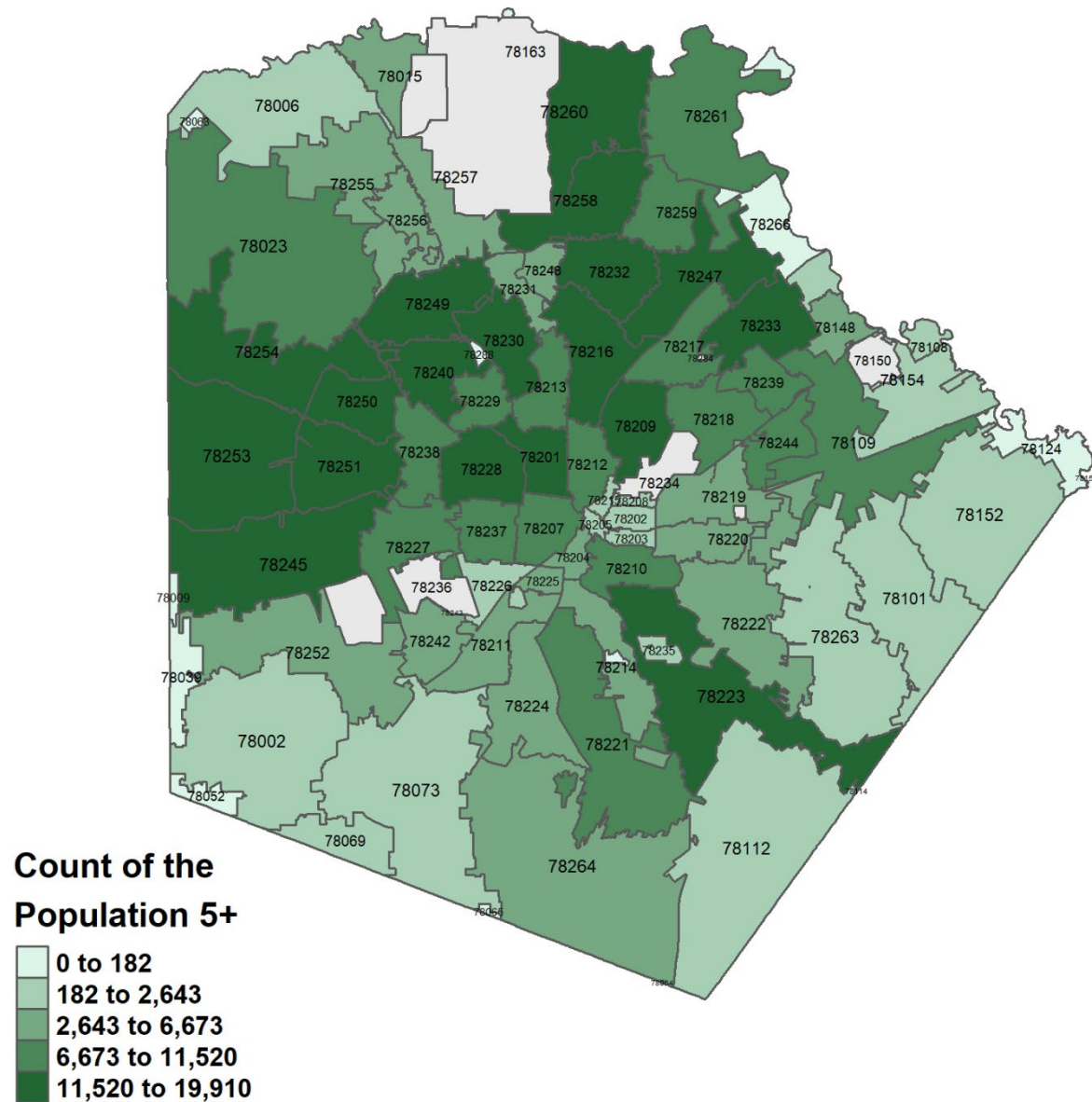
\*Individuals with a zip code that mapped into Bexar County — VA and DOD data not included

**Percent of Bexar County Residents 5+  
Fully Vaccinated  
(N=1,319,023\*)**



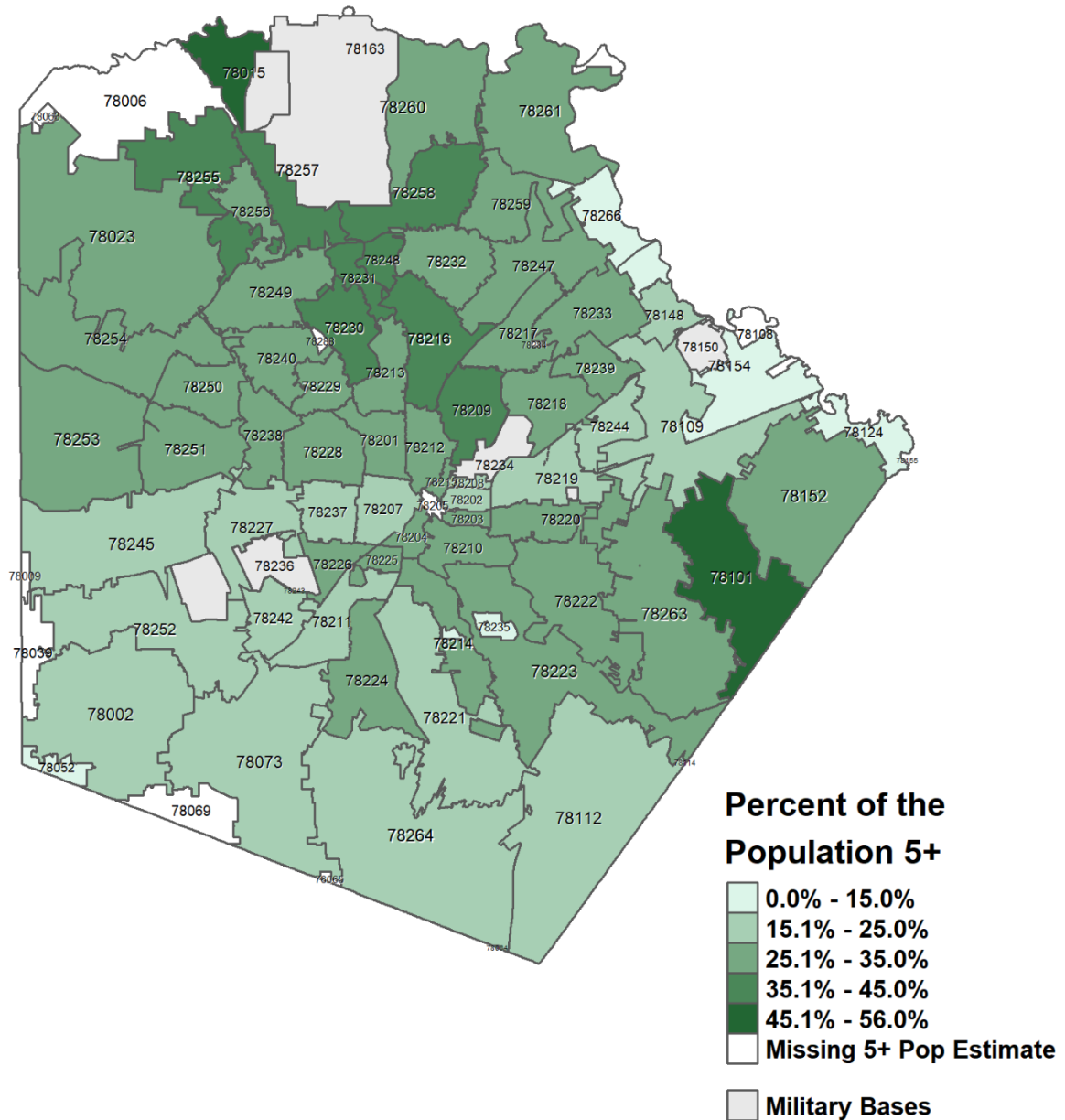
\*Individuals with a zip code that mapped into Bexar County — VA and DOD data not included

## Count of Bexar County Residents 5+ Vaccinated with Booster (N=529,805\*)



\*Individuals with a zip code that mapped into Bexar County — VA and DOD data not included

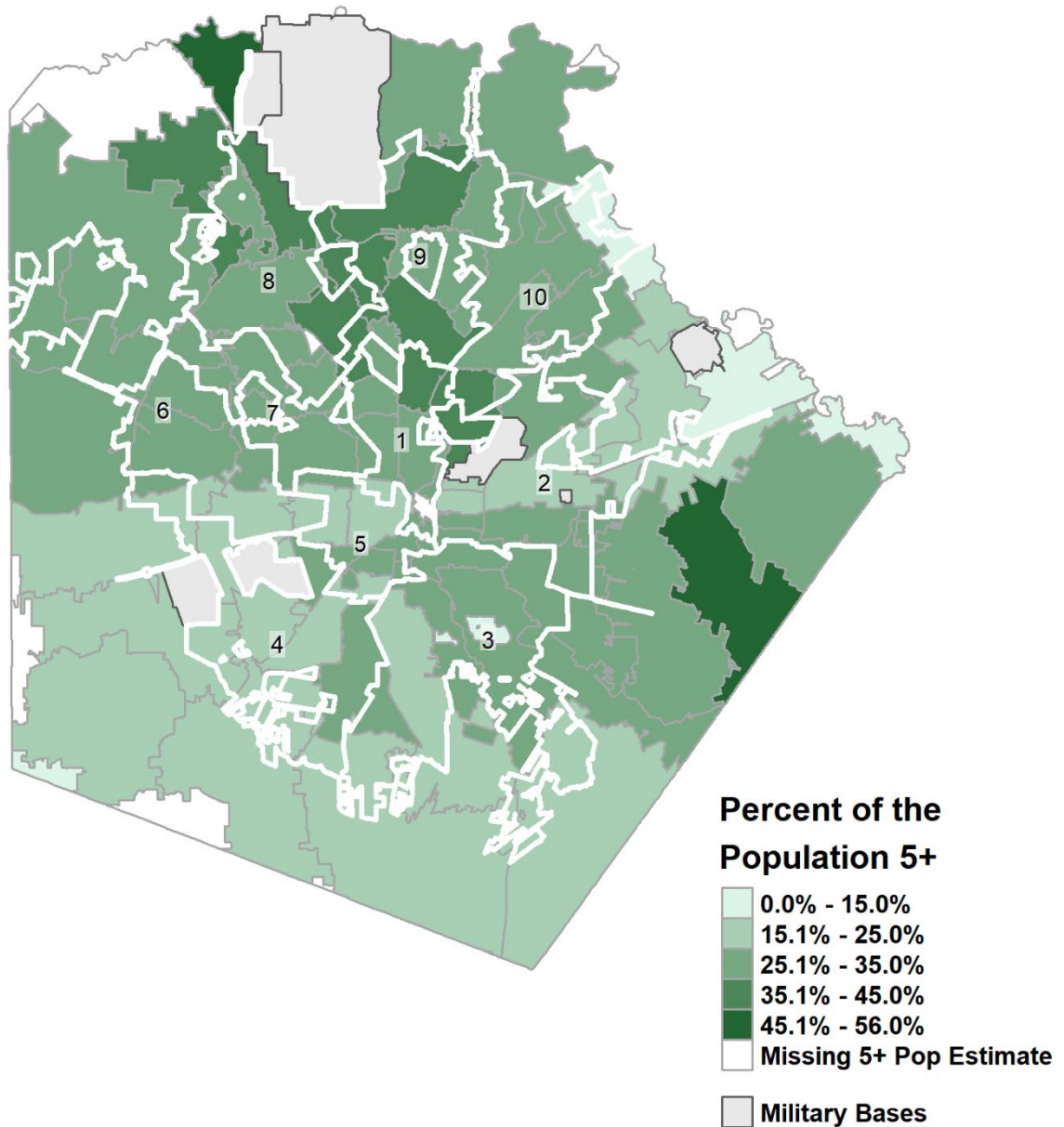
## Percent of Bexar County Residents 5+ Vaccinated with Booster (N=529,805\*)



\*Individuals with a zip code that mapped into Bexar County — VA and DOD data not included



**Percent of Bexar County Residents 5+  
Vaccinated with Booster  
(N=529,805\*)**



\*Individuals with a zip code that mapped into Bexar County — VA and DOD data not included